

Using the various functions:

Press and hold on/off button to turn mPowerpad 2 on.

mPowerpad 2 works using a thumbwheel selector.

To activate a function, scroll the thumbwheel to the respective LED on the functions dial and click. Do the same to turn function off.

You may activate any combination of functions (reading light, flashlight, insect repellent and FM radio) at the same time.

	Reading light	Turns on reading light.
	Flashlight	Turns on flashlight.
SOS	SOS signal	Flashes SOS signal in Morse Code via flashlight and reading light.
	Ultrasonic insect repellent	Emits high frequency sound waves to keep insects away.
	Battery indicator	If LED above blinks, device is in power saving mode. The four LEDs below indicate internal battery strength.
Radio functions		
FM	FM	Tunes in to any station between 76 Mhz–108 Mhz.
	Volume increase	Click to increase volume.
	Volume decrease	Click to decrease volume.
	Seek	Click to seek the next station.
	Store & recall	Seek desired station. Scroll to 'Store & recall' then click and hold to store currently playing station at LED clock positions 3 to 9. The corresponding LED will blink momentarily to indicate storage in progress. When LED stops blinking, release thumbwheel. Repeat to store up to seven stations. To play from stored station, scroll to 'Store & recall' and click to play. The corresponding LED will blink to indicate currently playing station. Click again to play the next station.

Note: Radio and ultrasonic insect repellent features are only included in mPowerpad 2 Xplore and Pro.

If you experience any trouble using mPowerpad 2, visit the Support section of www.thirdwavepower.com or contact your local reseller for further assistance.

SPECIFICATIONS

	mPowerpad 2 Lite	mPowerpad 2 Xplore	mPowerpad 2 Pro
Device capacity	12.2 Wh	24.4 Wh	42.9 Wh
Battery capacity	3300 mAh; 3.7V	6600 mAh; 3.7V	11600 mAh; 3.7V
Internal battery type	Lithium polymer		
Output	2 USB ports, 5V, up to 2000 mA		
Input via solar	Up to 1200 mA		
Input via USB	Up to 2000 mA*		
Dimensions	241.2 x 185.7 x 19.5 mm (9.5 x 7.3 x 0.7 inches)		
Weight	500 g (1.1 lb)	575 g (1.3 lb)	575 g + 125 g (1.3 lb + 0.3 lb)
Solar panel rated power peak watts	5.4 watts		
Solar panel type	Polycrystalline		
Charges:			
Smartphones (iPhone, Samsung and others)	2–3 times	4–5 times	Up to 7 times
Tablets (iPad, Samsung and others)	25–50%	50–100%	1–2 times
Plus iPods/MP3/MP4, e-readers, USB cameras, GPS, PSP/handheld game consoles, Bluetooth speakers and more			
Special features:	Water and dust resistant, Reading light (35 lumens), Flashlight, SOS signal	Water and dust resistant, Reading light (35 lumens), Flashlight, SOS signal, FM Radio, Insect repellent	

* Using the 2A USB power adaptor from Third Wave Power.

Limited warranty

Third Wave Power warrants the device against defects in materials and workmanship under normal use. The warranty period is 1 year for the device and 6 months for the batteries from the date of original purchase. During the warranty period, if a defect arises, and you follow the instructions below for submitting a warranty claim, we will, at our option, either (i) repair the device using either new or refurbished parts or (ii) replace the device with a new or refurbished unit. This limited warranty applies to any repair, replacement part or replacement device for the remainder of the original warranty period or for 30 days, whichever period is longer. All replaced parts and devices for which a refund is given shall become property of Third Wave Power. This limited warranty applies only to hardware components of the device that are not subject to accident, misuse, neglect, fire or other external causes, unauthorized use, alterations or repair, or commercial use.

Submitting a warranty claim

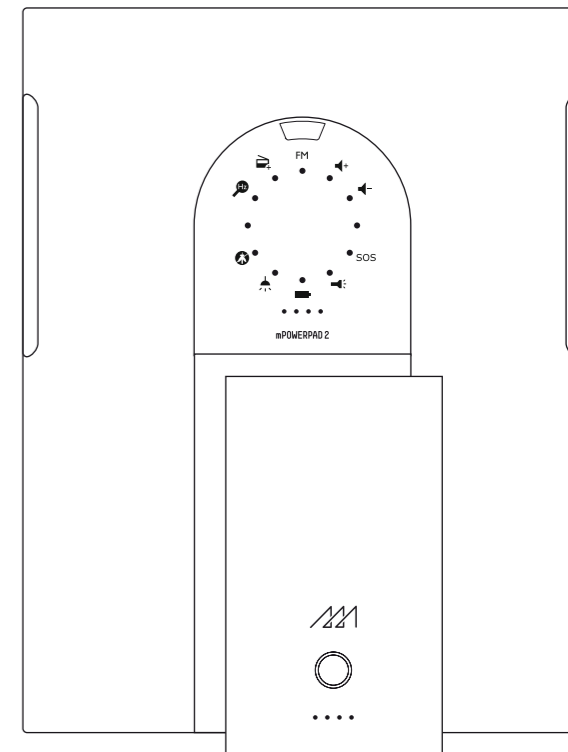
Before you submit a warranty claim, we recommend that you first visit the Support section for assistance. Valid warranty claims are generally processed through the point of purchase during the first 30 days after purchase; however this may vary depending on where you purchased the device — please check with your reseller. If you need to claim warranty directly from Third Wave Power, please email a copy of your purchase receipt along with the serial number of the device and a description of the technical problem to support@thirdwavepower.com.

Purchasing an extended warranty

Extended warranty may be purchased within 30 days of your purchase either at www.thirdwavepower.com or from your reseller.

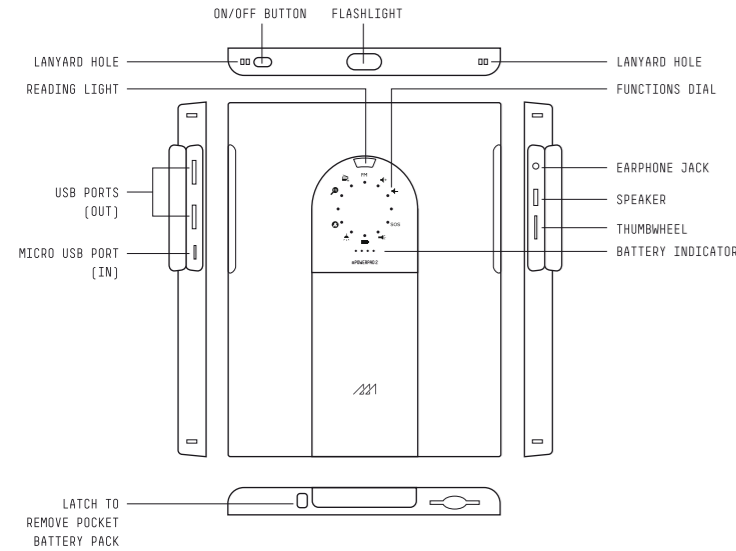
Customer support

If you have any questions on using the device, please visit the Support section of www.thirdwavepower.com. Alternatively, email your question to support@thirdwavepower.com.



mPowerpad 2 is a multi-function solar charger designed to provide portable power to users on the go. Add more charging power and portability with mPowerpack removable pocket battery pack.

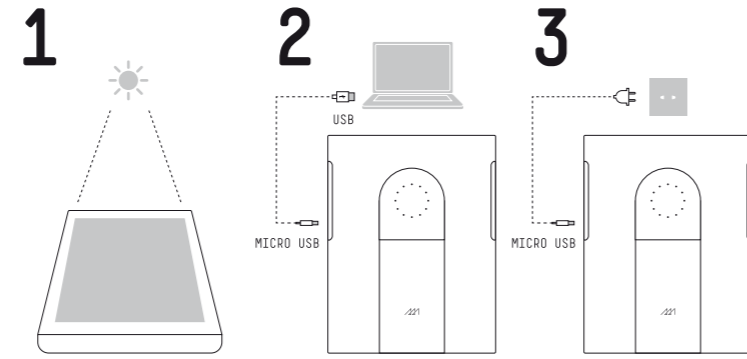
Use this guide to set up and start using your mPowerpad 2 solar charger.



WHAT'S IN THE BOX

	mPowerpad 2 Lite	mPowerpad 2 Xplore	mPowerpad 2 Pro
Internal battery capacity	3300 mAh	6600 mAh	6600 mAh
mPowerpack pocket battery pack	Available separately	Available separately	5000 mAh
Functions	 SOS	 SOS	 SOS
USB cable	Included	Included	Included
Lanyard	Included	Included	Included

There are three ways to charge mPowerpad:



From the sun
Turn mPowerpad 2 over so that the solar panel faces upwards. Leave it under the sun to charge fully.

From a computer with USB port
Connect mPowerpad 2 to the computer using the USB cable. Once connected, it will start charging.

From the wall socket
Connect mPowerpad 2 to the wall socket using the USB cable and a USB power adaptor*. Once connected, it will start charging.

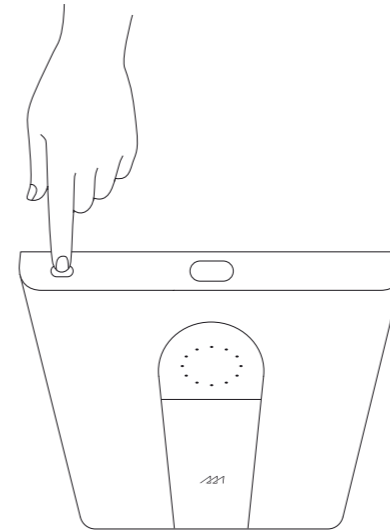
For first time use, mPowerpad 2 needs to be fully charged – which is when all four LEDs on the battery indicator light up.

For optimal results when charging from the sun, it is recommended that you first charge mPowerpad 2 without mPowerpack (if you have one). If you wish to charge mPowerpack from mPowerpad 2, press the 'on' button on mPowerpack to initiate charging.

* To be used with approved power adaptor.

	mPowerpad 2 Lite	mPowerpad 2 Xplore	mPowerpad 2 Pro
From sun*	~ 5 hrs	~ 8 hrs	~ 17 hrs
From wall socket**	~ 2 hrs	~ 5 hrs	~ 9 hrs

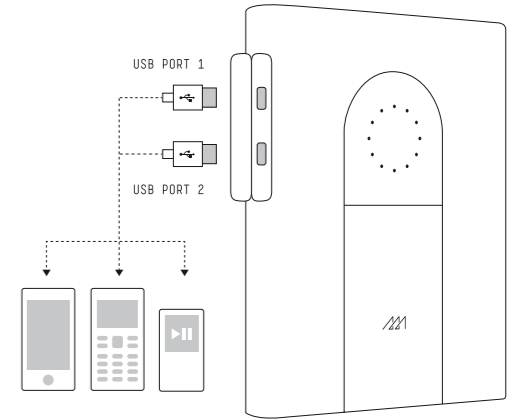
* Charge times may depend on weather conditions.
** For optimum charge times, use the 2A USB power adaptor available from Third Wave Power.



Power on/off:
To turn power on, press on/off button.

You may now start using the various functions. When mPowerpad 2 is left idle for 15s without any features turned on, it will automatically go into power saving mode. To activate it again, press or scroll thumbwheel.

To turn power off, press on/off button again.



Charging devices:
Turn power on. To charge your device, connect it to mPowerpad 2's USB port using the device's USB cable.

Once connected, the device will start charging.

For optimum charge times, always connect Apple devices to USB port 1 and Samsung devices to USB port 2. All other devices can be connected to either USB port.

- CAUTION
1. Battery replacement shall only be done by device supplier or by their authorised agents.
 2. Do not incinerate nor dispose of battery in fire.
 3. Do not immerse or soak battery in water or any liquids.